



One *simple* question could help **close the gap...**



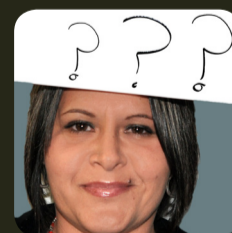
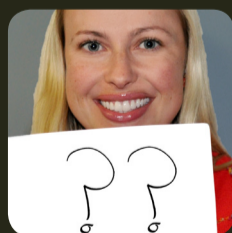
**Whether you are Aboriginal, or Torres Strait Islander, both, or neither, your answer to this question is important.**

**Why?** Because Governments need good quality information to measure the health of the Australian population and to support the delivery of effective, efficient health services for all Australians.

This question is asked of all patients, regardless of appearance, country of birth, or whether they are personally known to this health service.

Whether you answer 'yes', 'no' or 'both', you will receive the same high standard of health care that best meets your needs.

Personal information you provide to this service is protected by a strict Privacy Act.



## For more information

For more information about the Indigenous status question and how this information is used, please call the Australian Institute of Health and Welfare on **1800 223 919**, email **NIDISC@aihw.gov.au** or go to **[www.aihw.gov.au/indigenous/index.cfm](http://www.aihw.gov.au/indigenous/index.cfm)**



**Australian Government**  
Australian Institute of  
Health and Welfare