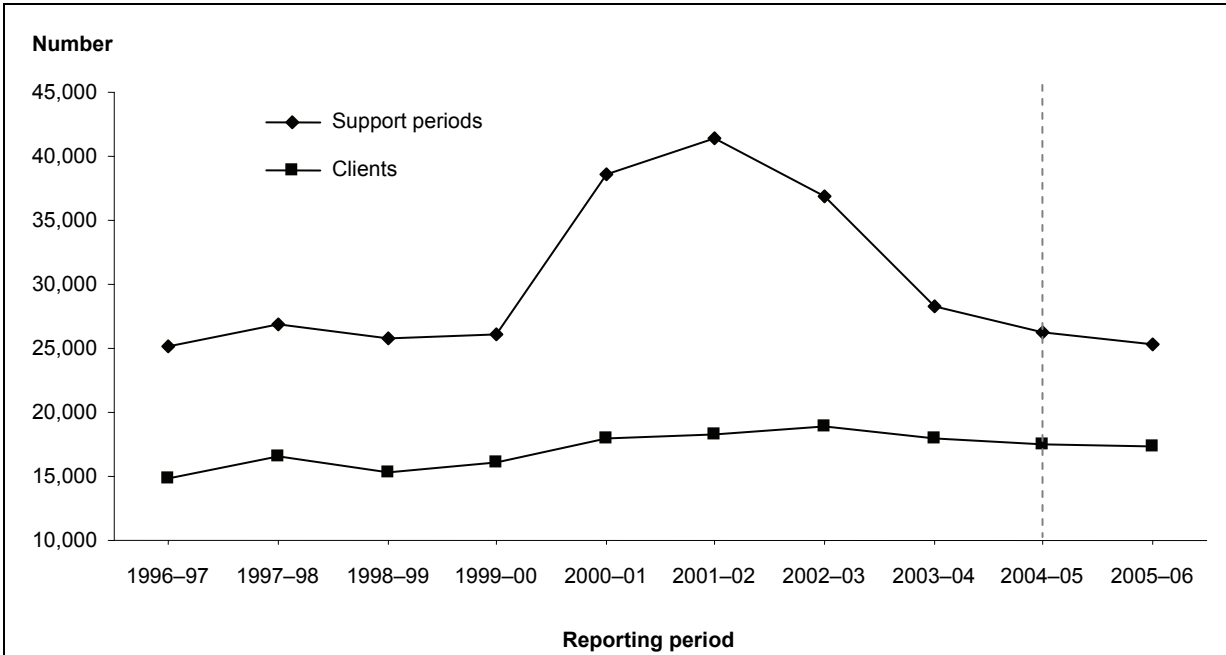


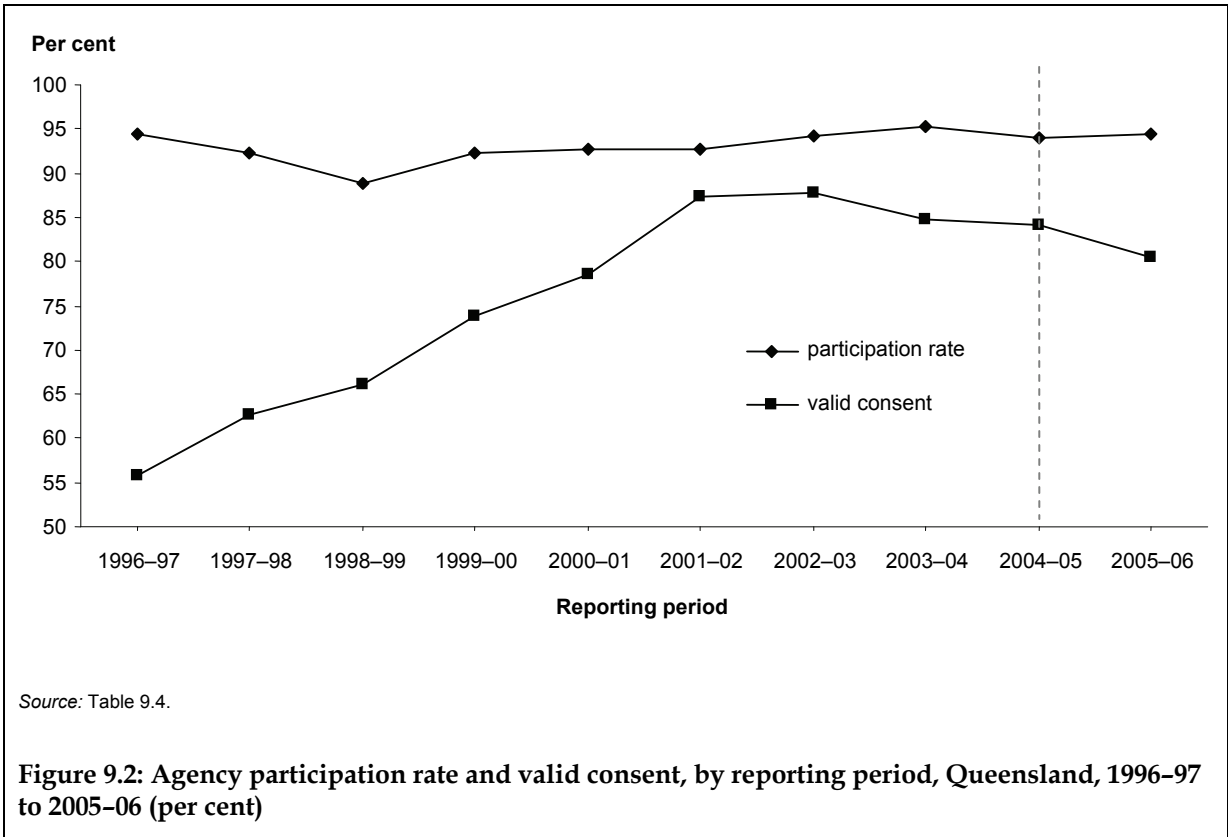
9 Support from 1996–97 to 2005–06

9.1 Key charts



Source: Table 9.2.

Figure 9.1: Number of SAAP support periods and clients, by reporting period, Queensland, 1996-97 to 2005-06



9.2 Tables

Table 9.1: SAAP funding to agencies and mean funding per support period and client: current and constant 2005–06 dollars, by reporting period, Queensland, 1996–97 to 2005–06

Reporting period	Total recurrent funding ^(a)	Funding to agencies ^(a)	Funding per support period ^(b)	Funding per client ^(b)
Current \$				
1996–97	31,119,000	28,027,000	1,120	1,890
1997–98	31,681,000	29,468,000	1,100	1,790
1998–99	32,782,000	31,049,000	1,210	2,030
1999–00	39,402,000	38,167,000	1,460	2,380
2000–01	42,960,000	42,268,000	1,090	2,350
2001–02	44,587,000	42,972,000	1,040	2,340
2002–03	46,008,000	45,841,000	1,240	2,430
2003–04	47,531,000	46,206,000	1,630	2,580
2004–05	48,015,000	47,640,000	1,810	2,720
2005–06	54,874,000	52,713,000	2,080	3,030
Constant 2005–06 \$				
1996–97	46,983,000	42,315,000	1,680	2,850
1997–98	45,911,000	42,704,000	1,590	2,590
1998–99	46,377,000	43,926,000	1,710	2,870
1999–00	57,931,000	56,116,000	2,150	3,500
2000–01	55,753,000	54,855,000	1,420	3,050
2001–02	55,886,000	53,861,000	1,300	2,930
2002–03	56,759,000	56,553,000	1,530	2,990
2003–04	55,559,000	54,011,000	1,900	3,010
2004–05	53,830,000	53,409,000	2,030	3,050
2005–06	54,874,000	52,713,000	2,080	3,030

(a) 'Total recurrent funding' and 'Funding to agencies' for 2003–04 includes state-only recurrent allocations which are in addition to the SAAP agreement between this government and the Australian Government (see Table 2.1; AIHW 2005:Table 2.1).

(b) 'Funding per support period' and 'Funding per client' are based on recurrent allocations to agencies.

Notes

1. In 2005–06 the definition of a support period, the definition of a client and the statistical linkage key were changed. Data using these are therefore not comparable to previous years.
2. Support period figures have been weighted to adjust for agency non-participation.
3. Client figures have been weighted to adjust for agency non-participation and client non-consent.

Sources: SAAP Administrative Data and Client Collections; AIHW 1997, 1999, 2000, 2001a, 2001b, 2002, 2003, 2005, 2006; FaCSIA unpublished data.

Table 9.2: SAAP support periods and clients, by reporting period, Queensland, 1996–97 to 2005–06 (number)

	1996–97	1997–98	1998–99	1999–00	2000–01	2001–02	2002–03	2003–04	2004–05	2005–06
Support periods	25,100	26,800	25,750	26,150	38,650	41,350	36,950	28,350	26,250	25,350
<i>Errors & omissions</i>	—	—	—	—	—	—	—	—	—	—
Clients	14,850	16,500	15,300	16,050	18,000	18,350	18,900	17,950	17,500	17,400
<i>Errors & omissions</i>	—	—	—	—	—	—	—	—	—	—
Nightly average support periods with accommodation	850	1,150	1,100	1,250	1,250	1,350	1,400	1,450	1,650	1,350
<i>Errors & omissions</i>	512	519	924	425	225	209	287	372	249	302
Daily average support periods	1,700	2,050	2,250	2,850	2,500	2,750	3,000	2,750	3,200	3,000
<i>Errors & omissions</i>	1,018	632	40	42	716	250	43	8	1	—

Notes

1. In 2005–06 the definition of a support period, the definition of a client and the statistical linkage key were changed. Data using these are therefore not comparable to previous years.
2. Numbers of clients in this table relate to clients who ever received assistance from a SAAP agency in Queensland.
3. Support period figures have been weighted to adjust for agency non-participation.
4. Client figures have been weighted to adjust for agency non-participation and client non-consent.

Source: SAAP Client Collection.

Table 9.3: SAAP accompanying child support periods and accompanying children by reporting period, Queensland, 2001–02 to 2005–06 (number)

	2001–02	2002–03	2003–04	2004–05	2005–06
Accompanying child support periods	13,200	13,200	11,150	10,700	10,950
<i>Errors & omissions</i>	—	—	—	—	—
Accompanying children	8,200	9,200	8,600	8,600	8,100
<i>Errors & omissions</i>	—	—	—	—	—
Nightly average accompanying child support periods with accommodation	1,000	1,000	1,100	1,250	1,050
<i>Errors & omissions</i>	127	195	132	130	151
Daily average accompanying child support periods	1,900	2,100	1,950	2,250	2,050
<i>Errors & omissions</i>	174	38	1	—	—

Notes

1. In 2005–06 the definition of an accompanying child support period, the definition of an accompanying child and the statistical linkage key were changed. Data using these are therefore not comparable to previous years.
2. Dates of support and accommodation are not collected for accompanying children. For the purposes of calculating the number of days of support and the number of nights of accommodation, accompanying children are assumed to have the same periods of support and accommodation as their parent(s) or guardian(s).
3. Numbers of accompanying children in this table relate to children who ever accompanied a client to a SAAP agency in Queensland.
4. In 2001–02, 2002–03 and 2003–04, data that enabled the number of accompanying children to be estimated was not collected by agencies using the high-volume collection form. The reporting year 2004–05 was the first year that the number of accompanying children could be reported for all participating agencies.
5. Accompanying child support period figures have been weighted to adjust for agency non-participation.
6. Accompanying children figures have been weighted to adjust for agency non-participation and client non-consent.

Source: SAAP Client Collection.

Table 9.4: SAAP Client Collection: agency participation rates and forms returned with informed consent and valid consent by reporting period, Queensland, 1996–97 to 2005–06

	1996–97	1997–98	1998–99	1999–00	2000–01	2001–02	2002–03	2003–04	2004–05	2005–06
Agencies ^(a) (number)	180	183	180	182	190	191	194	193	196	196
Agency participation rate (%)	94.4	92.3	88.9	92.3	92.6	92.7	94.3	95.3	93.9	94.4
Forms returned (number)	23,932	25,575	22,903	24,121	35,796	38,354	34,244	26,954	24,650	23,935
Forms returned with consent (%)	59.2	65.7	70.0	78.2	84.6	90.1	89.6	86.3	86.1	86.4
Forms returned with valid consent ^(b) (%)	55.9	62.7	66.0	73.8	78.5	87.3	87.8	84.7	84.2	80.4

(a) 'Agencies' refers to the number of agencies that were 'in scope'—that is, that should have been participating in the reference period.

(b) 'Valid consent' here refers to forms with a valid statistical linkage key (see 'statistical linkage key' in the Glossary and AIHW 2006:Glossary). Note that in 2005–06 the statistical linkage key was changed and therefore data using this is not comparable to previous years.

Note: Table based on forms returned from agencies in scope for the Client Collection during the reference period. Not all agencies funded under SAAP are required to participate in the Client Collection. For example, agencies that provide only support to other agencies or casual assistance lasting less than 1 hour on a given day and which is not of an ongoing nature are not required to participate in the collection. Consequently, some agencies funded under SAAP (see Chapter 2) are not included in this table.

Sources: SAAP Administrative Data and Client Collections.

