

6 Demographic profile for admitted patients

Introduction

This chapter presents a demographic profile of admitted patients who separated from hospital during 1999–00.

Data on the sex of each patient was reported to the National Hospital Morbidity Database as male, female, indeterminate or not stated/inadequately described. The 39 separations for patients who were not reported as male or female are included in totals for persons in the tables in this chapter.

Most States and Territories supplied the date of birth of the patient for the database, in which case the Institute calculated the age of the patient by subtracting the date of birth from the date of admission. The exceptions were Victoria and Queensland, which supplied the age in years or days for each patient. The 9 separations for which the age of the patient was not reported are included in the totals in tables including age group.

The data on Aboriginal and Torres Strait Islander status were supplied by most data providers, categorised as:

- Aboriginal but not Torres Strait Islander origin
- Torres Strait Islander but not Aboriginal origin
- Aboriginal and Torres Strait Islander origin
- not Aboriginal or Torres Strait Islander origin
- not reported.

The additional category *Aboriginal or Torres Strait Islander origin, not further specified* was created by the Institute to cater for definitional variations between jurisdictions, including the use of the superseded version of this data element.

All States and Territories except the Northern Territory supplied country of birth details coded to the Australian Bureau of Statistics' Australian Standard Classification of Countries for Social Statistics (ASCCSS). The Northern Territory data for country of birth, which was provided according to the Australian Bureau of Statistics' Standard Australian Classification of Countries (SACC), were mapped by the Institute to the ASCCSS.

The age-standardised rates in this chapter were derived using 30 June 1999 population estimates for Aboriginal and Torres Strait Islander peoples, other Australians and country of birth group population groups because 31 December (mid-year) estimates were not available for the Aboriginal and Torres Strait Islander and country of birth group populations; this includes age-standardised rates calculated for separations for Aboriginal and Torres Strait Islander persons and persons not of Aboriginal or Torres Strait Islander origin (Table 6.7) and by country of birth (Table 6.8). Thus, there will be small discrepancies between the age-standardised rates in this chapter and the standardised rates reported in Chapters 2, 4 and 5, which were based on 31 December 1999 estimates (see Appendix 3).

Sex

There were more separations for females than males in all age groups from 15 to 54 years (which include child-bearing ages for women), and also in the 75 years and over age groups (Table 6.1). Females accounted for higher proportions of separations than males, 53.0% of total separations in public hospitals (2,050,720) (Table 6.2) and 55.2% in private hospitals (1,117,162) (Table 6.3). Separations per 1,000 population were higher for females than males in age groups from 15 to 49 years in public hospitals and from 15 to 59 years in private hospitals (Figures 6.1 and 6.2). Females also accounted for more patient days (12,251,467) than males (10,334,365) (Table 6.4). In public hospitals, they accounted for 52.6% (8,543,397) of patient days, and for more patient days than males in the age groups, 15 to 44 years and 75 years and over (Table 6.5). In private hospitals, females accounted for 58.3% (3,708,070) of patient days, and for more patient days than males in the 15 years and over age groups (Table 6.6). Similar patterns were evident in the number of patient days reported per 1,000 population in both public and private hospitals (Figures 6.3 and 6.4).

Age

In public hospitals, separations peaked in two age groups. The first was in the 65 to 74 years age group, which was most commonly reported for male patients, and the second was in the 25 to 34 years age group, which was most commonly reported for female patients (Table 6.2). The number of separations per 1,000 population was highest for patients in the 85 years and over age group (Figure 6.1). The highest number of patient days for females was reported in the 75 to 84 years age group and for males in the age group 65 to 74 years (Table 6.5). Average length of stay was highest for patients aged 85 years and over (Figure 6.5).

In private hospitals, separations peaked in the 65 to 74 years age group for male patients and in the 45 to 54 years age group for female patients (Table 6.3). Patients in the 75 to 84 years age group accounted for the most patient days (Table 6.6), and had the highest number of separations per 1,000 population (Figure 6.2). As for public hospitals, the average length of stay was longest for patients aged 85 years and over (Figure 6.6).

In both sectors combined the population group 65 years and over accounted for a high proportion of admitted patient activity. This population (2,337,506), which comprised 12% of the total Australian population, accounted for 1.9 million separations (32.5%) and 10.8 million patient days (47.7%). There were 820.9 separations per 1,000 population for this age group compared with an overall rate of 309.6 per 1,000 for the total population. The average length of stay for these patients was 5.6 days, compared with 3.8 days for all patients.

Aboriginal and Torres Strait Islander status

Table 6.7 presents Aboriginal and Torres Strait Islander status data by hospital sector and State and Territory. For Aboriginal and Torres Strait Islander patients, the age-standardised rates were calculated using the Australian Bureau of Statistics experimental projections of the Aboriginal and Torres Strait Islander population for June 1999 (Appendix Table A6.2). These rates are subject to variability in relatively small populations of Aboriginals and Torres Strait Islanders, such as in the Australian Capital Territory.

There were 170,851 separations for patients reported as Aboriginal or Torres Strait Islander, mainly in New South Wales, Queensland, Western Australia and the Northern

Territory. Overall, on an age-standardised basis, there were 620.9 separations for Aboriginal and Torres Strait Islander patients reported per 1,000 Aboriginal and Torres Strait Islander population for Australia, compared to the rate for the overall population of 300.2 per 1,000.

After the Australian Capital Territory (for which rates are subject to variability), the Northern Territory reported the highest number of separations for Aboriginal and Torres Strait Islander patients per 1,000 Aboriginal and Torres Strait Islander population (962.5 per 1,000). Western Australia and South Australia reported the next highest rates (815.8 and 785.7 per 1,000, respectively), ahead of Queensland and New South Wales (644.4 and 423.8 per 1,000 population, respectively). These rates are influenced by the quality of the data on Aboriginal and Torres Strait Islander status, which varied among the States and Territories, as described below. They can also be influenced by variation among the jurisdictions in the health status of Aboriginals and Torres Strait Islanders and in their access to hospital services.

Figure 6.7 presents separation rates per 1,000 population by reported Aboriginal and Torres Strait Islander status and age group and sex. Aboriginal and Torres Strait Islander status categories included as 'Aboriginal or Torres Strait Islander' were *Aboriginal but not Torres Strait Islander origin*, *Torres Strait Islander but not Aboriginal origin*, *Aboriginal and Torres Strait Islander origin*, and *Aboriginal or Torres Strait Islander origin, not further specified*.

The rates for both Aboriginal and Torres Strait Islander males and females were higher than those for other patients in all age groups, and markedly so for patients aged over 34 years. Rates for Aboriginals and Torres Strait Islanders for older age groups are subject to variability due to the relatively small populations in these age groups.

Quality of Aboriginal and Torres Strait Islander status data

The variation in the number of Aboriginal and Torres Strait Islander separations per 1,000 Aboriginal and Torres Strait Islander population among the States and Territories suggests that there was variation in the proportion of Aboriginal and Torres Strait Islander persons who were identified as such in the hospital morbidity data collections and/or in the total population.

The quality of the data provided for Aboriginal and Torres Strait Islander status in 1999–00, although better than previous years, is still in need of improvement, being considered acceptable for only the Northern Territory and South Australia. Data on Aboriginal and Torres Strait Islander status in this chapter should therefore be interpreted cautiously.

For 1999–00, the New South Wales Health Department reports that its data were in need of improvement. To address this issue, the department has implemented a range of strategies which include the ongoing distribution of *Better Practice Guidelines to Improve the Level of Aboriginal and Torres Strait Islander Identification* and the release of a Departmental Circular, *Principles for Recording Aboriginal and Torres Strait Islander Origin Information of Patients and Clients*. In addition, its Aboriginal Health Information Strategy Unit continues to conduct the *Training Program for Frontline Staff* targeting staff who collect patient information. It also trains staff as facilitators across all Area Health Services.

The Victorian Department of Human Services reports that its 1999–00 data were in need of improvement. The *National Health Data Dictionary* question on Aboriginal and Torres Strait Islander status is a mandatory data field for admission to all hospitals. However, the question is not always asked and it is sometimes possible for systems to default to 'no'. Hospitals are encouraged to assess the quality of their data internally, but this is not mandatory and not all do so.

Queensland Health reports that its 1999–00 data were regarded as being in need of improvement. The Department is conducting a program of audits and is working to improve overall Aboriginal and Torres Strait Islander identification in all mainstream administrative data collections.

The Health Department of Western Australia regards its 1999–00 Aboriginal and Torres Strait Islander status data as being in need of improvement. This view is supported by findings of a recent project undertaken to assess the quality of identification of Aboriginal and Torres Strait Islander people in Western Australian hospital data. The project involved surveys in rural and metropolitan hospitals using the methodology developed in 1998 by the Aboriginal and Torres Strait Islander Health and Welfare Information Unit of the Australian Bureau of Statistics and the Australian Institute of Health and Welfare. The specific results are yet to be published.

The South Australian Department of Human Services regards its 1999–00 Aboriginal and Torres Strait Islander status data as being of acceptable quality. The Department conducts training courses in data collection every year and these reinforce the need to comply with *National Health Data Dictionary* standards for Aboriginal and Torres Strait Islander identification. A 30% loading for casemix payments is applied to Aboriginal and Torres Strait Islander separations in South Australia, and this acts as an incentive for improved identification.

The Tasmanian Department of Human Services reports that its 1999–00 data were much improved since 1998–99, but still in need of improvement. An outposted Australian Bureau of Statistics staff member is working with the department to improve the data quality throughout the State. The number of patients not responding to the Aboriginal and Torres Strait Islander questions is low.

The Australian Capital Territory Department of Health and Community Care considers that its 1999–00 data were in need of improvement. During 2000 the Department conducted training for both the Canberra Hospital and Calvary Hospital staff. Aboriginal Liaison Officers have been employed and Aboriginal and Torres Strait Islander status is a funding component in contracts with the hospitals. Identification has improved for 2000–01 and those data should prove to be satisfactory.

The Northern Territory's Territory Health Services reports that the quality of its 1999–00 Aboriginal and Torres Strait Islander status data is considered to be acceptable. Territory Health Services now retains historical reporting of Indigenous status and is soon to embark on a project where individual client systems will receive a report of individuals who have reported their Indigenous status as Aboriginal on one occasion and as Torres Strait Islander on another. System owners will follow up on these clients. All management and statistical reporting, however, is based on a person's currently reported Indigenous status.

Country of birth

Australian-born patients accounted for 74.1% (4,367,413) of total separations, 73.8% in the public sector and 74.6% in the private sector (Table 6.8). There was some variation in the proportions of separations in the public and private sectors by country of birth. For Australian-born persons, 65.4% were in the public sector, as were 78.8% for persons born in Greece, 77.2% for persons born in the Middle East and North Africa, 46.9% for persons born in Japan and 50.9% for persons born in the United States of America. The age and sex-standardised separation rate for Australian-born patients was higher (307.4 per 1,000) than that for the overseas-born population (241.7 per 1,000).

Table 6.1: Separations by age group and sex, all hospitals, States and Territories, 1999-00

Sex	Age group	NSW	Vic	Qld	WA	SA	Tas	ACT	NT ^(a)	Total
Females	Under 1	19,841	14,331	9,863	5,277	4,765	1,424	1,337	1,346	58,184
	1-4	24,561	15,188	14,895	7,862	6,378	1,477	1,029	1,173	72,563
	5-14	30,670	21,481	19,550	10,919	8,068	2,074	1,537	1,066	95,365
	15-24	89,270	67,404	58,213	31,745	26,135	6,822	3,881	4,525	287,995
	25-34	165,095	140,566	98,777	52,860	44,602	11,458	7,342	6,290	526,990
	35-44	122,775	110,113	80,241	42,753	34,625	9,278	6,169	5,232	411,186
	45-54	110,945	103,415	79,623	40,637	34,845	9,057	5,930	5,516	389,968
	55-64	111,726	95,838	74,536	35,737	32,183	7,983	5,631	4,398	368,032
	65-74	138,233	115,384	83,925	36,952	38,319	8,466	5,267	1,420	427,966
	75-84	129,992	100,848	68,228	31,138	36,906	8,261	3,675	734	379,782
85 and over	50,949	41,369	25,061	13,001	14,926	3,199	1,208	131	149,844	
	<i>Total^(b)</i>	<i>994,062</i>	<i>825,938</i>	<i>612,912</i>	<i>308,881</i>	<i>281,752</i>	<i>69,499</i>	<i>43,006</i>	<i>31,832</i>	<i>3,167,882</i>
Males	Under 1	28,092	20,470	13,693	7,302	6,647	1,835	1,700	1,563	81,302
	1-4	36,073	22,835	21,014	11,657	9,139	2,128	1,786	1,567	106,199
	5-14	43,022	28,657	26,936	13,854	10,124	2,684	1,905	1,450	128,632
	15-24	55,257	42,386	38,234	18,744	14,851	3,599	2,593	1,757	177,421
	25-34	66,979	57,078	45,167	26,358	19,760	4,934	3,257	3,275	226,808
	35-44	84,417	72,621	57,871	31,458	23,728	6,340	4,554	4,771	285,760
	45-54	107,817	89,420	76,137	35,676	32,717	7,363	5,864	5,212	360,206
	55-64	123,551	105,223	83,640	38,414	33,835	8,343	6,656	2,746	402,408
	65-74	156,785	137,937	95,872	43,833	44,093	10,442	7,229	2,775	498,966
	75-84	125,522	97,316	72,983	31,209	34,555	8,408	4,221	742	374,956
85 and over	28,512	23,543	15,865	8,102	8,613	1,853	639	127	87,254	
	<i>Total^(b)</i>	<i>856,027</i>	<i>697,487</i>	<i>547,412</i>	<i>266,607</i>	<i>238,062</i>	<i>57,929</i>	<i>40,404</i>	<i>25,987</i>	<i>2,729,915</i>
Persons ^(b)	Under 1	47,934	34,823	23,556	12,579	11,412	3,261	3,037	2,912	139,514
	1-4	60,634	38,023	35,909	19,519	15,517	3,605	2,815	2,740	178,762
	5-14	73,692	50,138	46,486	24,773	18,192	4,757	3,442	2,517	223,997
	15-24	144,527	109,790	96,447	50,489	40,986	10,421	6,474	6,289	465,423
	25-34	232,074	197,644	143,944	79,219	64,362	16,394	10,599	9,568	753,804
	35-44	207,192	182,734	138,112	74,211	58,353	15,619	10,723	10,009	696,953
	45-54	218,762	192,835	155,760	76,313	67,562	16,423	11,794	10,729	750,178
	55-64	235,277	201,061	158,176	74,151	66,018	16,327	12,287	7,144	770,441
	65-74	295,018	253,321	179,797	80,785	82,412	18,918	12,496	4,195	926,942
	75-84	255,514	198,164	141,211	62,347	71,461	16,669	7,896	1,476	754,738
85 and over	79,461	64,912	40,926	21,103	23,539	5,052	1,847	258	237,098	
Total separations		1,850,090	1,523,447	1,160,324	575,489	519,814	127,446	83,410	57,840	5,897,860

(a) Public hospitals only in the Northern Territory.

(b) Includes patient days for which sex and/or age group were not reported.

Table 6.2: Separations by age group and sex, public hospitals, States and Territories, 1999–00

Sex	Age group	NSW	Vic	Qld	WA	SA	Tas	ACT	NT	Total
Females	Under 1	16,980	12,093	8,287	3,899	4,453	938	870	1,346	48,866
	1–4	21,414	13,003	11,952	6,059	5,427	1,153	842	1,173	61,023
	5–14	24,231	16,772	15,169	7,892	6,579	1,381	1,261	1,066	74,351
	15–24	65,860	49,737	45,257	20,350	21,216	4,570	3,056	4,525	214,571
	25–34	115,309	98,429	66,180	32,862	34,872	6,628	5,403	6,290	365,973
	35–44	75,317	67,160	47,069	25,030	24,052	5,040	4,087	5,232	252,987
	45–54	61,727	58,841	42,429	22,144	20,179	4,570	3,778	5,516	219,184
	55–64	67,488	58,283	40,027	20,376	19,399	4,258	4,001	4,398	218,230
	65–74	89,991	71,206	44,999	23,074	24,619	4,750	4,024	1,420	264,083
	75–84	86,618	61,012	34,366	19,101	22,456	4,403	2,459	734	231,149
85 and over	38,628	26,713	14,280	8,855	8,883	1,947	863	131	100,300	
	<i>Total^(a)</i>	<i>663,564</i>	<i>533,250</i>	<i>370,015</i>	<i>189,642</i>	<i>192,135</i>	<i>39,638</i>	<i>30,644</i>	<i>31,832</i>	<i>2,050,720</i>
Males	Under 1	23,656	17,115	11,206	5,343	6,136	1,200	1,129	1,563	67,348
	1–4	31,021	19,578	16,820	9,076	7,802	1,585	1,456	1,567	88,905
	5–14	35,545	23,127	21,461	10,413	8,435	1,835	1,516	1,450	103,782
	15–24	40,179	28,497	27,728	11,513	10,365	2,406	1,864	1,757	124,309
	25–34	47,889	40,726	32,962	18,282	14,736	3,440	2,678	3,275	163,988
	35–44	56,421	48,700	38,674	20,640	16,831	3,993	3,636	4,771	193,666
	45–54	66,539	55,973	43,613	21,336	21,312	4,240	4,392	5,212	222,617
	55–64	76,656	68,823	49,969	23,576	22,303	5,160	4,971	2,746	254,204
	65–74	104,986	94,183	56,087	28,205	30,012	6,563	5,338	2,775	328,149
	75–84	78,693	58,326	31,042	17,308	23,811	4,737	2,616	742	217,275
85 and over	20,664	15,297	8,337	5,060	6,142	1,143	416	127	57,186	
	<i>Total^(a)</i>	<i>582,249</i>	<i>470,346</i>	<i>337,899</i>	<i>170,752</i>	<i>167,885</i>	<i>36,302</i>	<i>30,012</i>	<i>25,987</i>	<i>1,821,432</i>
Persons ^(a)	Under 1	40,637	29,221	19,493	9,242	10,589	2,138	1,999	2,912	116,231
	1–4	52,435	32,581	28,772	15,135	13,229	2,738	2,298	2,740	149,928
	5–14	59,776	39,899	36,630	18,305	15,014	3,216	2,777	2,517	178,134
	15–24	106,039	78,234	72,985	31,863	31,581	6,976	4,920	6,289	338,887
	25–34	163,198	139,155	99,142	51,144	49,608	10,068	8,081	9,568	529,964
	35–44	131,738	115,860	85,743	45,670	40,883	9,033	7,723	10,009	446,659
	45–54	128,266	114,814	86,042	43,480	41,491	8,811	8,170	10,729	441,803
	55–64	144,144	127,106	89,996	43,952	41,702	9,418	8,972	7,144	472,434
	65–74	194,977	165,389	101,086	51,279	54,631	11,323	9,362	4,195	592,242
	75–84	165,311	119,338	65,408	36,409	46,267	9,140	5,075	1,476	448,424
85 and over	59,292	42,010	22,617	13,915	15,025	3,090	1,279	258	157,486	
Total separations		1,245,814	1,003,609	707,914	360,394	360,020	75,951	60,656	57,840	3,872,198

(a) Includes separations for which sex and/or age group were not reported.

Table 6.3: Separations by age group and sex, private hospitals, States and Territories, 1999–00

Sex	Age group	NSW	Vic	Qld	WA	SA	Tas	ACT	NT	Total
Females	Under 1	2,861	2,238	1,576	1,378	312	486	467	n.a.	9,318
	1–4	3,147	2,185	2,943	1,803	951	324	187	n.a.	11,540
	5–14	6,439	4,709	4,381	3,027	1,489	693	276	n.a.	21,014
	15–24	23,410	17,667	12,956	11,395	4,919	2,252	825	n.a.	73,424
	25–34	49,786	42,137	32,597	19,998	9,730	4,830	1,939	n.a.	161,017
	35–44	47,458	42,953	33,172	17,723	10,573	4,238	2,082	n.a.	158,199
	45–54	49,218	44,574	37,194	18,493	14,666	4,487	2,152	n.a.	170,784
	55–64	44,238	37,555	34,509	15,361	12,784	3,725	1,630	n.a.	149,802
	65–74	48,242	44,178	38,926	13,878	13,700	3,716	1,243	n.a.	163,883
	75–84	43,374	39,836	33,862	12,037	14,450	3,858	1,216	n.a.	148,633
85 and over	12,321	14,656	10,781	4,146	6,043	1,252	345	n.a.	49,544	
	<i>Total^(a)</i>	<i>330,498</i>	<i>292,688</i>	<i>242,897</i>	<i>119,239</i>	<i>89,617</i>	<i>29,861</i>	<i>12,362</i>	<i>n.a.</i>	<i>1,117,162</i>
Males	Under 1	4,436	3,355	2,487	1,959	511	635	571	n.a.	13,954
	1–4	5,052	3,257	4,194	2,581	1,337	543	330	n.a.	17,294
	5–14	7,477	5,530	5,475	3,441	1,689	849	389	n.a.	24,850
	15–24	15,078	13,889	10,506	7,231	4,486	1,193	729	n.a.	53,112
	25–34	19,090	16,352	12,205	8,076	5,024	1,494	579	n.a.	62,820
	35–44	27,996	23,921	19,197	10,818	6,897	2,347	918	n.a.	92,094
	45–54	41,278	33,447	32,524	14,340	11,405	3,123	1,472	n.a.	137,589
	55–64	46,895	36,400	33,671	14,838	11,532	3,183	1,685	n.a.	148,204
	65–74	51,799	43,754	39,785	15,628	14,081	3,879	1,891	n.a.	170,817
	75–84	46,829	38,990	41,941	13,901	10,744	3,671	1,605	n.a.	157,681
85 and over	7,848	8,246	7,528	3,042	2,471	710	223	n.a.	30,068	
	<i>Total^(a)</i>	<i>273,778</i>	<i>227,141</i>	<i>209,513</i>	<i>95,855</i>	<i>70,177</i>	<i>21,627</i>	<i>10,392</i>	<i>n.a.</i>	<i>908,483</i>
Persons ^(a)	Under 1	7,297	5,602	4,063	3,337	823	1,123	1,038	n.a.	23,283
	1–4	8,199	5,442	7,137	4,384	2,288	867	517	n.a.	28,834
	5–14	13,916	10,239	9,856	6,468	3,178	1,541	665	n.a.	45,863
	15–24	38,488	31,556	23,462	18,626	9,405	3,445	1,554	n.a.	126,536
	25–34	68,876	58,489	44,802	28,075	14,754	6,326	2,518	n.a.	223,840
	35–44	75,454	66,874	52,369	28,541	17,470	6,586	3,000	n.a.	250,294
	45–54	90,496	78,021	69,718	32,833	26,071	7,612	3,624	n.a.	308,375
	55–64	91,133	73,955	68,180	30,199	24,316	6,909	3,315	n.a.	298,007
	65–74	100,041	87,932	78,711	29,506	27,781	7,595	3,134	n.a.	334,700
	75–84	90,203	78,826	75,803	25,938	25,194	7,529	2,821	n.a.	306,314
85 and over	20,169	22,902	18,309	7,188	8,514	1,962	568	n.a.	79,612	
Total separations		604,276	519,838	452,410	215,095	159,794	51,495	22,754	n.a.	2,025,662

(a) Includes separations for which sex and/or age group were not reported.

n.a. not available.

Table 6.4: Patient days by age group and sex, all hospitals, States and Territories, 1999-00

Sex	Age group	NSW	Vic	Qld	WA	SA	Tas	ACT	NT ^(a)	Total
Females	Under 1	105,232	74,628	59,878	29,086	25,791	8,770	7,362	10,309	321,056
	1-4	47,893	26,624	25,408	14,803	11,897	2,444	1,969	6,415	137,453
	5-14	67,159	43,230	39,279	22,970	15,776	3,681	2,806	4,399	199,300
	15-24	232,399	165,430	148,384	84,785	64,736	18,004	10,346	14,201	738,285
	25-34	486,173	384,717	296,375	159,445	125,603	33,365	24,607	19,138	1,529,423
	35-44	387,623	290,470	204,070	121,160	96,940	27,096	18,492	14,023	1,159,874
	45-54	339,263	273,779	237,504	108,980	93,436	25,998	17,815	11,451	1,108,226
	55-64	372,451	277,235	223,726	107,341	101,953	28,107	17,050	11,247	1,139,110
	65-74	606,187	457,840	345,365	138,402	164,843	42,415	20,724	4,889	1,780,665
	75-84	851,572	641,829	463,875	198,023	253,090	70,505	24,073	3,846	2,506,813
85 and over	535,644	411,988	348,710	125,745	152,937	41,710	11,820	1,993	1,630,547	
	<i>Total^(b)</i>	<i>4,031,601</i>	<i>3,048,476</i>	<i>2,392,574</i>	<i>1,110,740</i>	<i>1,107,002</i>	<i>302,095</i>	<i>157,064</i>	<i>101,915</i>	<i>12,251,467</i>
Males	Under 1	130,753	96,336	75,352	36,659	33,494	10,197	9,873	9,874	402,538
	1-4	65,564	39,903	35,471	21,512	15,261	3,381	2,848	5,827	189,767
	5-14	86,357	53,179	50,182	27,427	18,703	4,939	3,517	5,364	249,668
	15-24	197,226	123,804	135,175	55,103	47,227	10,334	7,361	7,162	583,392
	25-34	247,498	163,811	163,012	75,614	65,687	13,529	8,549	11,654	749,354
	35-44	281,856	193,052	205,363	83,243	67,013	17,000	11,946	14,215	873,688
	45-54	382,896	238,872	222,839	96,553	89,297	22,505	16,094	12,327	1,081,383
	55-64	442,015	313,941	308,628	112,224	107,914	29,695	20,208	11,500	1,346,125
	65-74	698,283	500,391	397,867	164,542	184,115	46,934	28,204	9,812	2,030,148
	75-84	710,483	508,718	423,300	167,326	196,201	50,642	21,700	3,539	2,081,909
85 and over	239,764	194,414	141,319	64,741	79,819	19,806	5,048	1,383	746,294	
	<i>Total^(b)</i>	<i>3,482,695</i>	<i>2,426,517</i>	<i>2,158,508</i>	<i>904,944</i>	<i>904,731</i>	<i>228,962</i>	<i>135,348</i>	<i>92,660</i>	<i>10,334,365</i>
Persons ^(b)	Under 1	235,987	171,096	135,230	65,745	59,285	18,967	17,235	20,194	723,739
	1-4	113,457	66,527	60,879	36,315	27,158	5,825	4,817	12,242	327,220
	5-14	153,516	96,409	89,461	50,397	34,479	8,620	6,323	9,764	448,969
	15-24	429,625	289,234	283,559	139,888	111,963	28,338	17,707	21,382	1,321,696
	25-34	733,671	548,528	459,387	235,062	191,290	46,896	33,156	30,797	2,278,787
	35-44	669,479	483,522	409,433	204,403	163,953	44,097	30,438	28,254	2,033,579
	45-54	722,159	512,651	460,343	205,533	182,733	48,506	33,909	23,779	2,189,613
	55-64	814,466	591,176	532,354	219,565	209,867	57,803	37,258	22,747	2,485,236
	65-74	1,304,470	958,231	743,232	302,944	348,958	89,364	48,928	14,701	3,810,828
	75-84	1,562,055	1,150,547	887,175	365,349	449,291	121,149	45,773	7,385	4,588,724
85 and over	775,408	606,402	490,029	190,486	232,756	61,516	16,868	3,376	2,376,841	
Total patient days		7,514,298	5,475,125	4,551,082	2,015,687	2,011,733	531,081	292,412	194,628	22,586,046

(a) Public hospitals only in the Northern Territory.

(b) Includes patient days for which sex and/or age group were not reported.

Table 6.5: Patient days by age group and sex, public hospitals, States and Territories, 1999-00

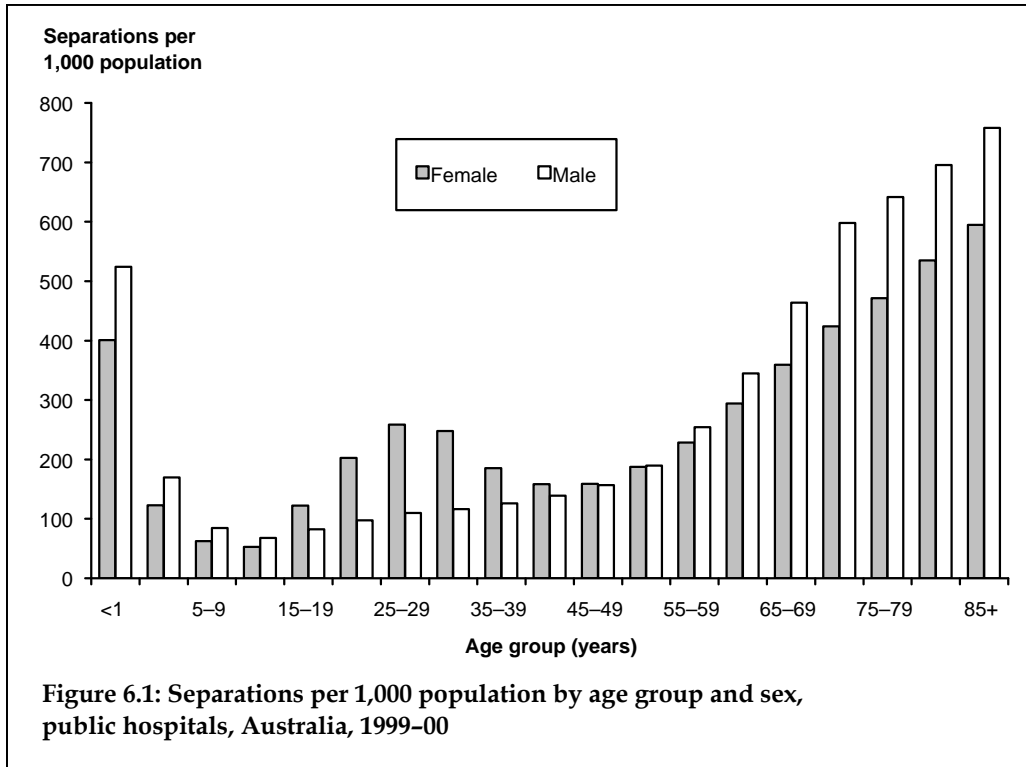
Sex	Age group	NSW	Vic	Qld	WA	SA	Tas	ACT	NT	Total
Females	Under 1	89,149	64,049	50,032	22,824	23,746	6,902	5,124	10,309	272,135
	1-4	43,669	24,061	21,187	12,369	10,900	2,038	1,731	6,415	122,370
	5-14	55,955	36,694	32,905	18,853	13,839	2,741	2,461	4,399	167,847
	15-24	188,427	129,766	121,372	63,437	54,507	12,923	8,542	14,201	593,175
	25-34	349,475	264,317	205,027	98,544	94,965	19,538	17,305	19,138	1,068,309
	35-44	276,946	183,237	125,970	72,807	67,386	15,959	11,652	14,023	767,980
	45-54	227,635	167,660	150,238	63,875	57,194	14,012	11,877	11,451	703,942
	55-64	262,029	180,021	139,111	66,911	64,934	17,191	12,185	11,247	753,629
	65-74	450,864	306,213	209,872	87,009	115,130	26,371	14,790	4,889	1,215,138
	75-84	646,579	431,454	260,255	128,343	170,923	47,774	16,098	3,846	1,705,272
85 and over	436,896	285,501	217,801	88,772	102,829	30,987	8,110	1,993	1,172,889	
	<i>Total^(a)</i>	<i>3,027,625</i>	<i>2,073,679</i>	<i>1,533,770</i>	<i>723,744</i>	<i>776,353</i>	<i>196,436</i>	<i>109,875</i>	<i>101,915</i>	<i>8,543,397</i>
Males	Under 1	111,416	82,663	63,041	28,829	31,286	7,527	7,311	9,874	341,947
	1-4	59,287	36,219	30,040	18,128	13,841	2,710	2,421	5,827	168,473
	5-14	73,696	45,731	42,282	22,988	16,663	3,780	2,959	5,364	213,463
	15-24	172,386	94,710	118,219	41,999	38,864	8,095	6,216	7,162	487,651
	25-34	213,195	126,864	141,899	61,545	56,207	10,565	7,400	11,654	629,329
	35-44	230,010	146,214	168,663	64,119	53,024	12,183	9,814	14,215	698,242
	45-54	292,524	168,742	149,516	66,279	63,893	14,924	11,629	12,327	779,834
	55-64	333,102	222,592	224,134	76,729	78,136	21,475	15,342	11,500	983,010
	65-74	548,798	364,225	271,747	110,865	137,342	32,411	20,732	9,812	1,495,932
	75-84	516,065	330,552	217,097	93,771	150,093	31,512	13,290	3,539	1,355,919
85 and over	191,113	137,399	80,233	41,338	63,185	14,739	3,421	1,383	532,811	
	<i>Total^(a)</i>	<i>2,741,592</i>	<i>1,756,007</i>	<i>1,506,871</i>	<i>626,590</i>	<i>702,534</i>	<i>159,921</i>	<i>100,535</i>	<i>92,660</i>	<i>7,686,710</i>
Persons ^(a)	Under 1	200,567	146,755	113,073	51,653	55,032	14,429	12,435	20,194	614,138
	1-4	102,956	60,280	51,227	30,497	24,741	4,748	4,152	12,242	290,843
	5-14	129,651	82,425	75,187	41,841	30,502	6,521	5,420	9,764	381,311
	15-24	360,813	224,476	239,591	105,436	93,371	21,018	14,758	21,382	1,080,845
	25-34	562,670	391,181	346,926	160,089	151,172	30,103	24,705	30,797	1,697,643
	35-44	506,956	329,451	294,633	136,926	120,410	28,142	21,466	28,254	1,466,238
	45-54	520,159	336,402	299,754	130,154	121,087	28,937	23,506	23,779	1,483,778
	55-64	595,131	402,613	363,245	143,640	143,070	38,666	27,527	22,747	1,736,639
	65-74	999,662	670,438	481,619	197,874	252,472	58,797	35,522	14,701	2,711,085
	75-84	1,162,644	762,006	477,352	222,114	321,016	79,286	29,388	7,385	3,061,191
85 and over	628,009	422,900	298,034	130,110	166,014	45,726	11,531	3,376	1,705,700	
Total patient days		5,769,219	3,829,729	3,040,641	1,350,334	1,478,887	356,373	210,410	194,628	16,230,221

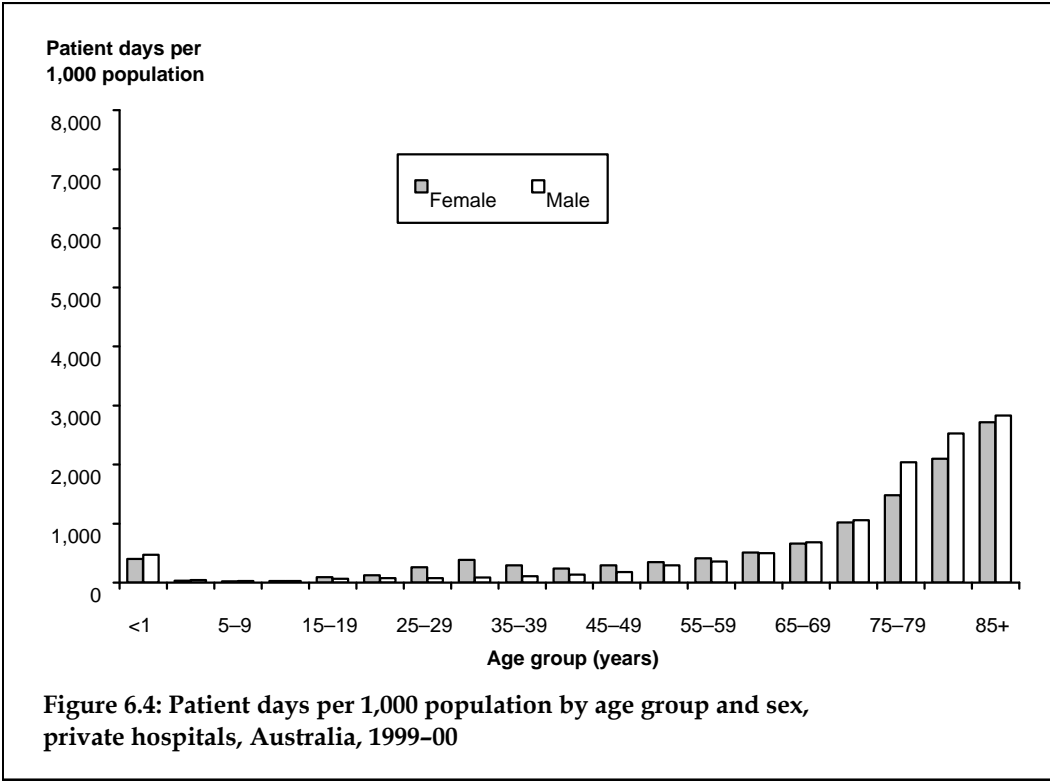
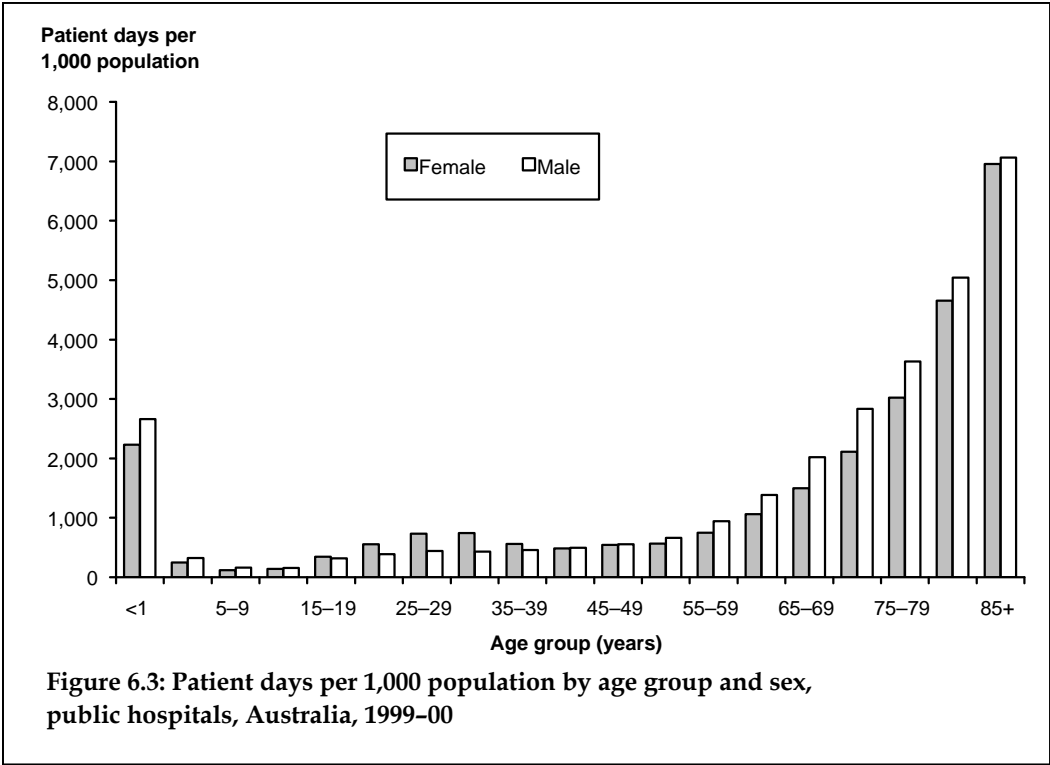
(a) Includes patient days for which sex and/or age group were not reported.

Table 6.6: Patient days by age group and sex, private hospitals, States and Territories, 1999–00

Sex	Age group	NSW	Vic	Qld	WA	SA	Tas	ACT	NT	Total
Females	Under 1	16,083	10,579	9,846	6,262	2,045	1,868	2,238	n.a.	48,921
	1–4	4,224	2,563	4,221	2,434	997	406	238	n.a.	15,083
	5–14	11,204	6,536	6,374	4,117	1,937	940	345	n.a.	31,453
	15–24	43,972	35,664	27,012	21,348	10,229	5,081	1,804	n.a.	145,110
	25–34	136,698	120,400	91,348	60,901	30,638	13,827	7,302	n.a.	461,114
	35–44	110,677	107,233	78,100	48,353	29,554	11,137	6,840	n.a.	391,894
	45–54	111,628	106,119	87,266	45,105	36,242	11,986	5,938	n.a.	404,284
	55–64	110,422	97,214	84,615	40,430	37,019	10,916	4,865	n.a.	385,481
	65–74	155,323	151,627	135,493	51,393	49,713	16,044	5,934	n.a.	565,527
	75–84	204,993	210,375	203,620	69,680	82,167	22,731	7,975	n.a.	801,541
85 and over	98,748	126,487	130,909	36,973	50,108	10,723	3,710	n.a.	457,658	
	<i>Total^(a)</i>	<i>1,003,976</i>	<i>974,797</i>	<i>858,804</i>	<i>386,996</i>	<i>330,649</i>	<i>105,659</i>	<i>47,189</i>	<i>n.a.</i>	<i>3,708,070</i>
Males	Under 1	19,337	13,673	12,311	7,830	2,208	2,670	2,562	n.a.	60,591
	1–4	6,277	3,684	5,431	3,384	1,420	671	427	n.a.	21,294
	5–14	12,661	7,448	7,900	4,439	2,040	1,159	558	n.a.	36,205
	15–24	24,840	29,094	16,956	13,104	8,363	2,239	1,145	n.a.	95,741
	25–34	34,303	36,947	21,113	14,069	9,480	2,964	1,149	n.a.	120,025
	35–44	51,846	46,838	36,700	19,124	13,989	4,817	2,132	n.a.	175,446
	45–54	90,372	70,130	73,323	30,274	25,404	7,581	4,465	n.a.	301,549
	55–64	108,913	91,349	84,494	35,495	29,778	8,220	4,866	n.a.	363,115
	65–74	149,485	136,166	126,120	53,677	46,773	14,523	7,472	n.a.	534,216
	75–84	194,418	178,166	206,203	73,555	46,108	19,130	8,410	n.a.	725,990
85 and over	48,651	57,015	61,086	23,403	16,634	5,067	1,627	n.a.	213,483	
	<i>Total^(a)</i>	<i>741,103</i>	<i>670,510</i>	<i>651,637</i>	<i>278,354</i>	<i>202,197</i>	<i>69,041</i>	<i>34,813</i>	<i>n.a.</i>	<i>2,647,655</i>
Persons ^(a)	Under 1	35,420	24,341	22,157	14,092	4,253	4,538	4,800	n.a.	109,601
	1–4	10,501	6,247	9,652	5,818	2,417	1,077	665	n.a.	36,377
	5–14	23,865	13,984	14,274	8,556	3,977	2,099	903	n.a.	67,658
	15–24	68,812	64,758	43,968	34,452	18,592	7,320	2,949	n.a.	240,851
	25–34	171,001	157,347	112,461	74,973	40,118	16,793	8,451	n.a.	581,144
	35–44	162,523	154,071	114,800	67,477	43,543	15,955	8,972	n.a.	567,341
	45–54	202,000	176,249	160,589	75,379	61,646	19,569	10,403	n.a.	705,835
	55–64	219,335	188,563	169,109	75,925	66,797	19,137	9,731	n.a.	748,597
	65–74	304,808	287,793	261,613	105,070	96,486	30,567	13,406	n.a.	1,099,743
	75–84	399,411	388,541	409,823	143,235	128,275	41,863	16,385	n.a.	1,527,533
85 and over	147,399	183,502	191,995	60,376	66,742	15,790	5,337	n.a.	671,141	
Total patient days		1,745,079	1,645,396	1,510,441	665,353	532,846	174,708	82,002	n.a.	6,355,825

(a) Includes patient days for which sex and/or age group were not reported.
n.a. not available.





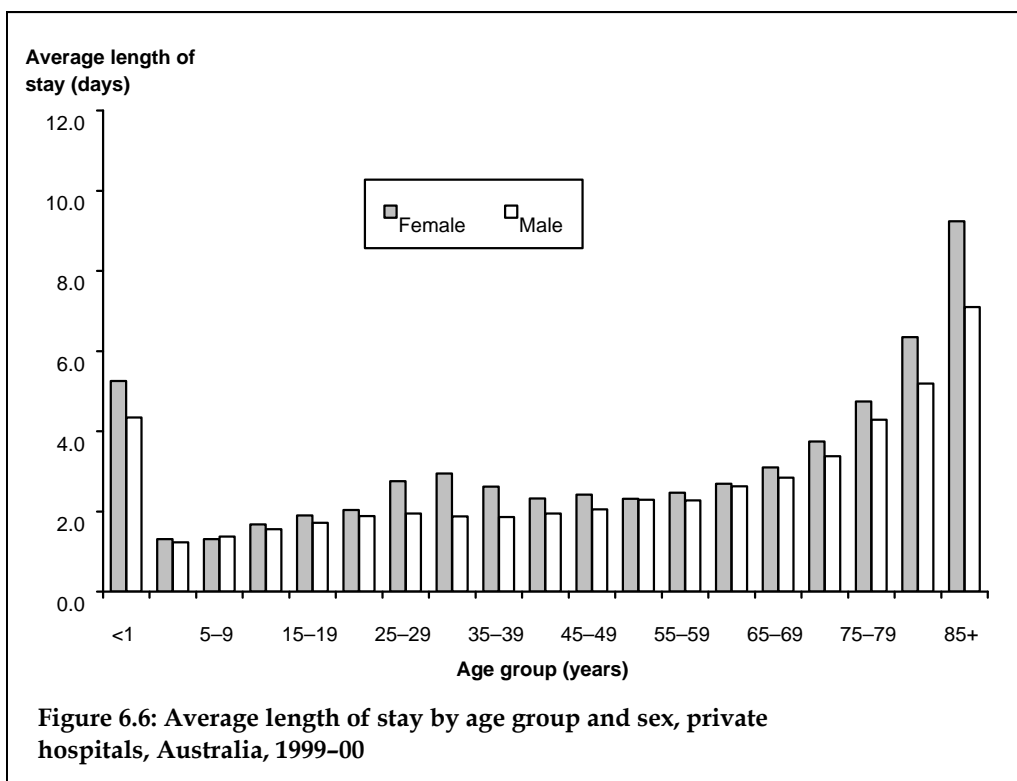
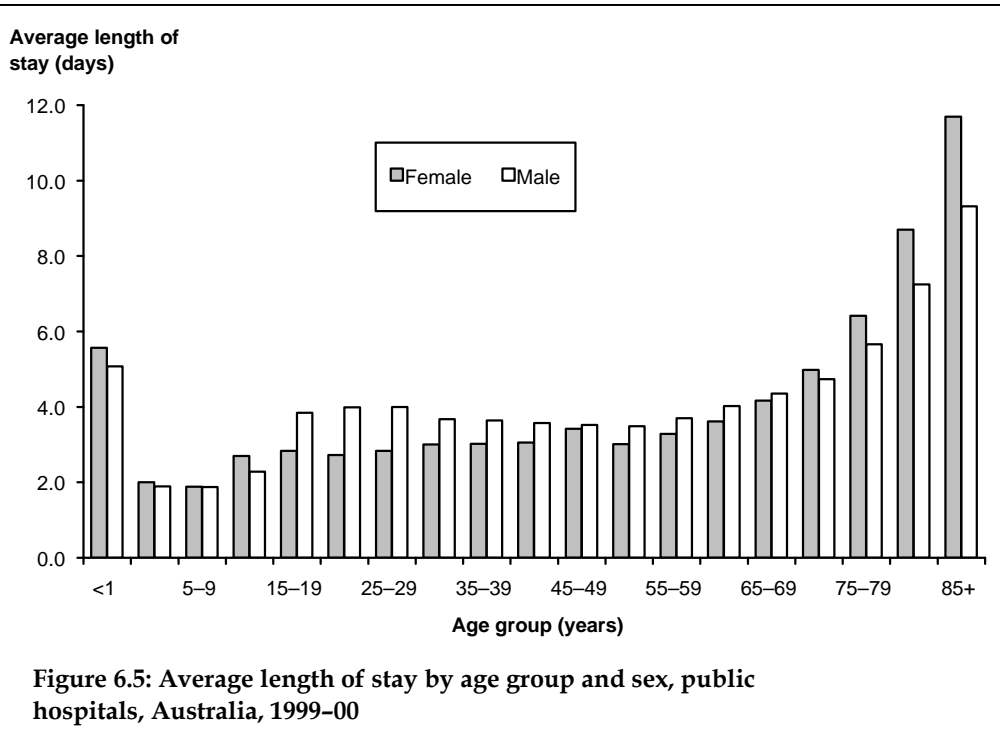


Table 6.7: Separations by Aboriginal or Torres Strait Islander status^(a) and hospital sector, States and Territories, 1999–00

	NSW	Vic	Qld	WA	SA	Tas	ACT	NT	Total
Aboriginal or Torres Strait Islander status									
Public hospitals									
Aboriginal but not Torres Strait Islander origin	29,283	6,371	37,341	33,740	12,104	917	204	33,703	153,663
Torres Strait Islander but not Aboriginal origin	462	92	7,709	47	21	258	15	72	8,676
Aboriginal and Torres Strait Islander origin	120	309	1,776	160	58	30	0	548	3,001
Aboriginal or Torres Strait Islander origin, not further specified	0	0	0	0	0	0	939	0	939
Not Aboriginal or Torres Strait Islander origin	1,215,949	996,837	636,511	326,444	337,547	69,899	58,746	23,399	3,665,332
Not reported	0	0	24,577	3	10,290	4,847	752	118	40,587
<i>Total</i>	<i>1,245,814</i>	<i>1,003,609</i>	<i>707,914</i>	<i>360,394</i>	<i>360,020</i>	<i>75,951</i>	<i>60,656</i>	<i>57,840</i>	<i>3,872,198</i>
Private hospitals									
Aboriginal but not Torres Strait Islander origin	2,675	86	453	682	165	0	3	n.a.	4,064
Torres Strait Islander but not Aboriginal origin	105	31	67	35	4	0	0	n.a.	242
Aboriginal and Torres Strait Islander origin	28	73	105	33	10	17	0	n.a.	266
Aboriginal or Torres Strait Islander origin, not further specified	0	0	0	0	0	0	0	n.a.	0
Not Aboriginal or Torres Strait Islander origin	601,465	519,628	361,847	214,345	151,699	43,199	22,746	n.a.	1,914,929
Not reported	3	20	89,938	0	7,916	8,279	5	n.a.	106,161
<i>Total</i>	<i>604,276</i>	<i>519,838</i>	<i>452,410</i>	<i>215,095</i>	<i>159,794</i>	<i>51,495</i>	<i>22,754</i>	<i>n.a.</i>	<i>2,025,662</i>
All hospitals^(b)									
Aboriginal but not Torres Strait Islander origin	31,958	6,457	37,794	34,422	12,269	917	207	33,703	157,727
Torres Strait Islander but not Aboriginal origin	567	123	7,776	82	25	258	15	72	8,918
Aboriginal and Torres Strait Islander origin	148	382	1,881	193	68	47	0	548	3,267
Aboriginal or Torres Strait Islander origin, not further specified	0	0	0	0	0	0	939	0	939
Not Aboriginal or Torres Strait Islander origin	1,817,414	1,516,465	998,358	540,789	489,246	113,098	81,492	23,399	5,580,261
Not reported	3	20	114,515	3	18,206	13,126	757	118	146,748
Total	1,850,090	1,523,447	1,160,324	575,489	519,814	127,446	83,410	57,840	5,897,860
Separation rate ^(c) for Aboriginal and/or Torres Strait Islanders per 1,000	423.8	393.6	644.4	815.8	785.7	133.2	1835.7 ^(d)	962.5	620.9
Separation rate ^(c) for others per 1,000	274.0	307.5	286.6	299.7	306.9	234.5	288.6	207.4	288.4
Separation rate ^(c) for all per 1,000	275.4	307.8	325.6	311.3	322.7	258.4	293.1	365.3	300.2

(a) Identification of Aboriginal and Torres Strait Islander patients is not considered to be complete and completeness varies amongst the jurisdictions. See the text of Chapter 6 for further detail.

(b) Public hospitals only in the Northern Territory.

(c) The rates were directly age-standardised to the Australian population at 30 June 1991. For details, see Appendix 3. Aboriginal and Torres Strait Islander population data are included in Appendix 6.

(d) Rates reported for the Aboriginal and Torres Strait Islander population in the Australian Capital Territory are subject to variability due to the small population of Aboriginal and Torres Strait Islanders in the Ter n.a. not available.

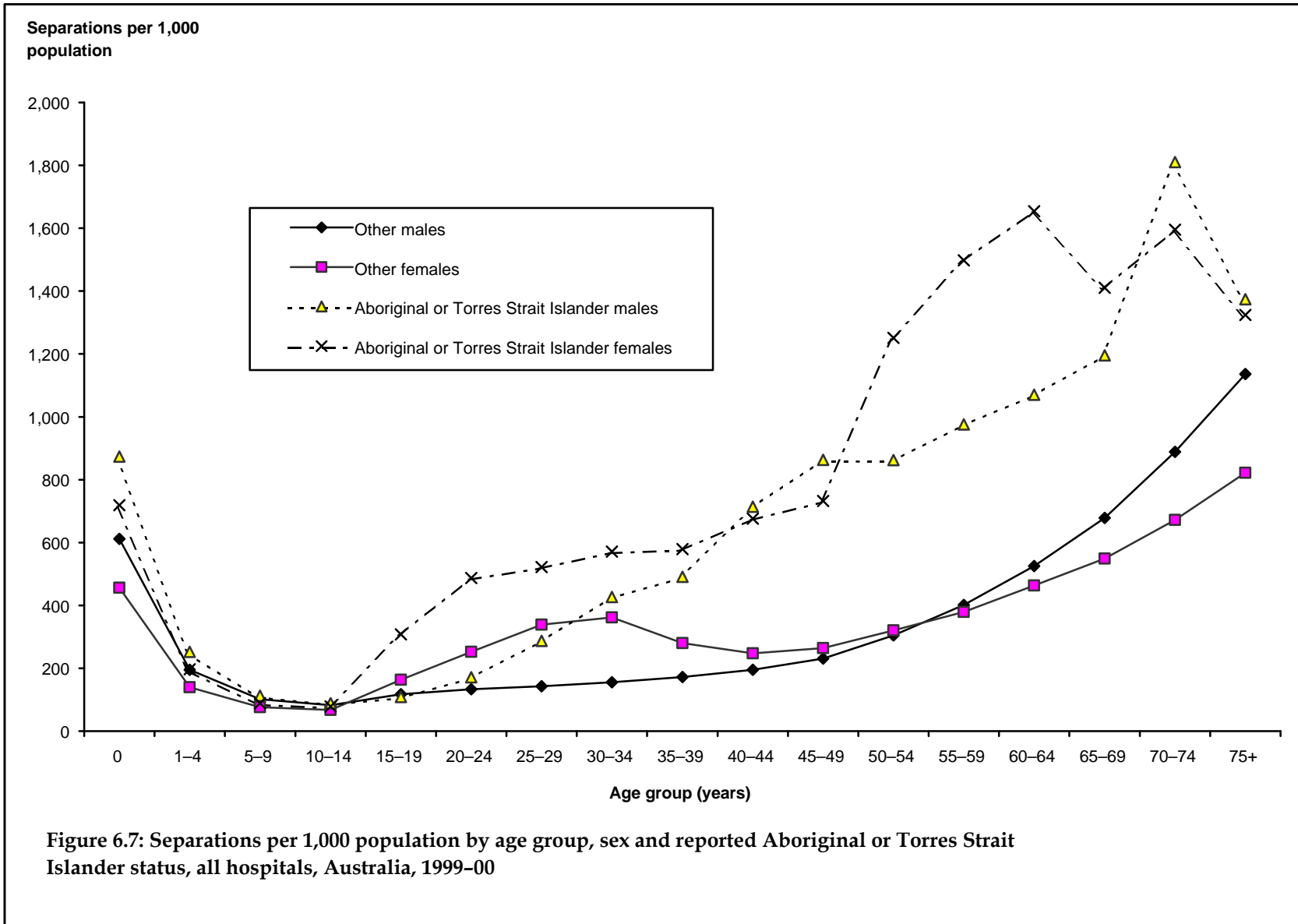


Table 6.8: Separations by selected country/region of birth and hospital sector, Australia, 1999-00

Country/region	Separations			Separations per 1,000 population ^(a)		
	Public hospitals	Private hospitals	All sectors	Public hospitals	Private hospitals	All sectors
Australia	2,855,921	1,511,492	4,367,413	200.1	107.3	307.4
New Zealand	58,596	24,195	82,791	173.3	69.7	243.0
Papua New Guinea	4,349	2,436	6,785	222.7	128.4	351.1
Fiji	10,069	2,966	13,035	307.0	91.6	398.6
Oceania (other)	12,440	4,012	16,452	389.4	122.7	512.1
<i>Oceania (total)</i>	<i>2,941,375</i>	<i>1,545,101</i>	<i>4,486,476</i>	<i>200.1</i>	<i>106.4</i>	<i>306.4</i>
United Kingdom and Ireland	261,558	141,097	402,655	154.6	77.8	232.4
Greece	49,191	13,262	62,453	198.2	60.3	258.5
Italy	83,343	41,181	124,524	185.2	92.0	277.3
Malta	15,761	5,710	21,471	186.2	70.0	256.2
Former Yugoslavia	48,284	11,962	60,246	179.2	41.4	220.6
Former USSR and Baltic States	20,592	6,272	26,864	197.7	61.7	259.5
Hungary	8,420	4,975	13,395	144.3	72.6	216.9
Poland	19,843	8,888	28,731	142.4	66.1	208.5
Romania	2,977	1,206	4,183	169.8	67.9	237.6
Austria	5,163	4,291	9,454	209.3	294.2	503.5
France	3,740	2,075	5,815	178.9	91.1	270.0
Germany	28,070	15,758	43,828	165.5	81.0	246.5
Netherlands	24,946	10,553	35,499	165.4	67.2	232.7
Europe and the former USSR (other)	31,082	13,513	44,595	202.0	81.7	283.7
<i>Europe and the former USSR (total)</i>	<i>602,970</i>	<i>280,743</i>	<i>883,713</i>	<i>168.8</i>	<i>75.0</i>	<i>243.7</i>
Lebanon	24,944	4,979	29,923	302.5	52.8	355.3
Turkey	9,139	1,804	10,943	293.2	54.1	347.3
Iran	3,237	1,056	4,293	185.7	47.6	233.3
Egypt	11,187	5,273	16,460	204.6	83.3	287.9
Middle East and North Africa (other)	11,625	4,666	16,291	223.3	91.7	315.0
<i>Middle East and North Africa (total)</i>	<i>60,132</i>	<i>17,778</i>	<i>77,910</i>	<i>253.0</i>	<i>69.2</i>	<i>322.1</i>

(continued)

Table 6.8 (continued): Separations by selected country/region of birth and hospital sector, Australia, 1999-00

Country/region	Separations			Separations per 1,000 population ^(a)		
	Public hospitals	Private hospitals	All sectors	Public hospitals	Private hospitals	All sectors
Myanmar	2,106	1,198	3,304	122.3	64.2	186.5
Indonesia	5,949	3,575	9,524	135.6	77.4	212.9
Cambodia	4,879	904	5,783	232.2	39.4	271.6
Malaysia	8,641	6,582	15,223	138.8	91.0	229.8
Philippines	18,700	3,774	22,474	166.0	29.0	194.9
Singapore	3,471	2,672	6,143	292.3	207.8	500.1
Vietnam	26,391	5,522	31,913	155.7	29.2	184.9
Thailand	2,297	764	3,061	132.6	52.1	184.7
China	22,732	8,045	30,777	116.1	38.8	154.9
Hong Kong and Macau	5,871	4,169	10,040	220.9	157.5	378.4
Japan	2,321	2,624	4,945	210.6	224.3	434.9
Korea	3,930	1,203	5,133	109.8	32.9	142.8
India	16,468	8,127	24,595	140.8	64.7	205.5
Sri Lanka	10,107	4,128	14,235	172.8	65.1	237.8
Asia (other)	9,491	2,809	12,300	246.1	61.8	307.9
<i>Asia (total)</i>	<i>143,354</i>	<i>56,096</i>	<i>199,450</i>	<i>148.8</i>	<i>55.8</i>	<i>204.7</i>
Canada	3,812	3,207	7,019	144.7	118.5	263.2
United States of America	6,720	6,489	13,209	131.8	117.5	249.4
North America (other)	262	59	321	684.2	156.4	840.5
<i>North America (total)</i>	<i>10,794</i>	<i>9,755</i>	<i>20,549</i>	<i>137.7</i>	<i>116.1</i>	<i>253.8</i>
Argentina	1,843	812	2,655	146.0	58.2	204.2
Chile	5,237	1,744	6,981	217.3	60.7	278.0
The Caribbean	1,104	702	1,806	383.8	161.5	545.2
Other	8,129	2,479	10,608	203.1	57.6	260.6
<i>South America, Central America and The Caribbean (total)</i>	<i>16,313</i>	<i>5,737</i>	<i>22,050</i>	<i>207.3</i>	<i>64.4</i>	<i>271.7</i>
Mauritius	3,751	1,783	5,534	222.2	84.9	307.1
South Africa	8,883	7,511	16,394	128.2	101.2	229.4
Africa excluding North Africa (other)	7,853	3,594	11,447	187.4	89.4	276.8
<i>Africa excluding North Africa (total)</i>	<i>20,487</i>	<i>12,888</i>	<i>33,375</i>	<i>154.5</i>	<i>92.9</i>	<i>247.3</i>
<i>Overseas (total)</i>	<i>939,504</i>	<i>416,606</i>	<i>1,356,110</i>	<i>171.8</i>	<i>69.9</i>	<i>241.7</i>
Not stated or inadequately described	76,773	97,564	174,337
Total	3,872,198	2,025,662	5,897,860	198.5	101.2	299.7

(a) The rates were directly age and sex standardised to the Australian population at 30 June 1991. For details, see Appendix 3. Population data by country of birth are included in Appendix 6.

.. not applicable.