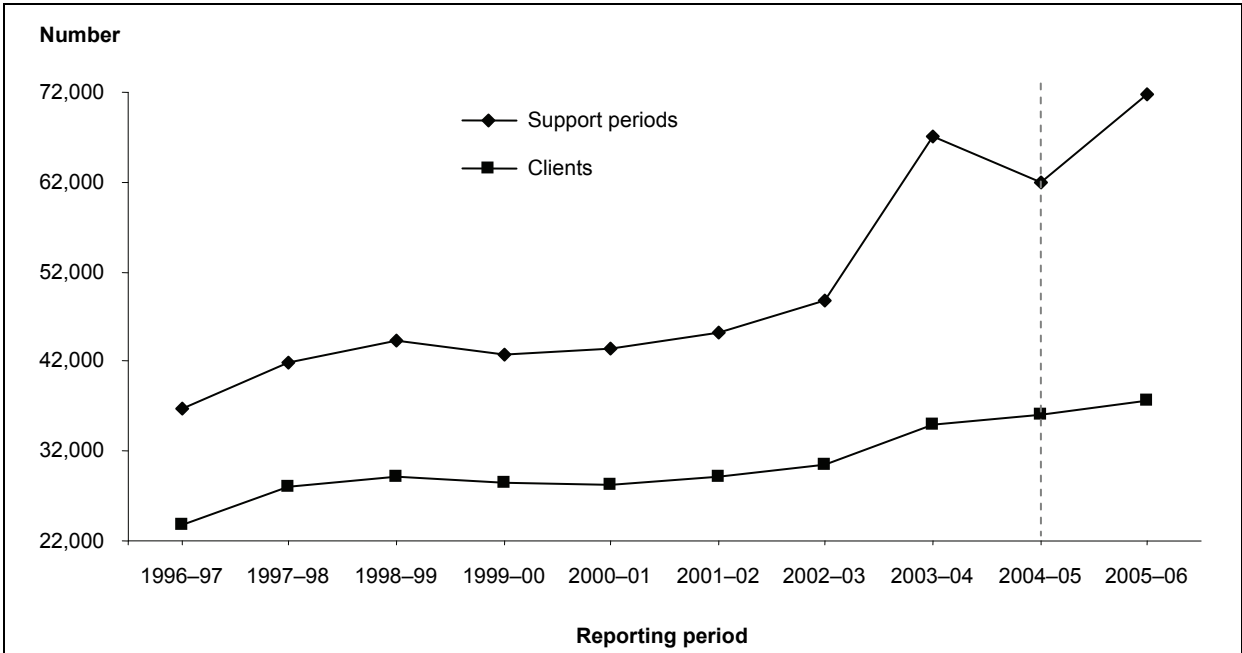


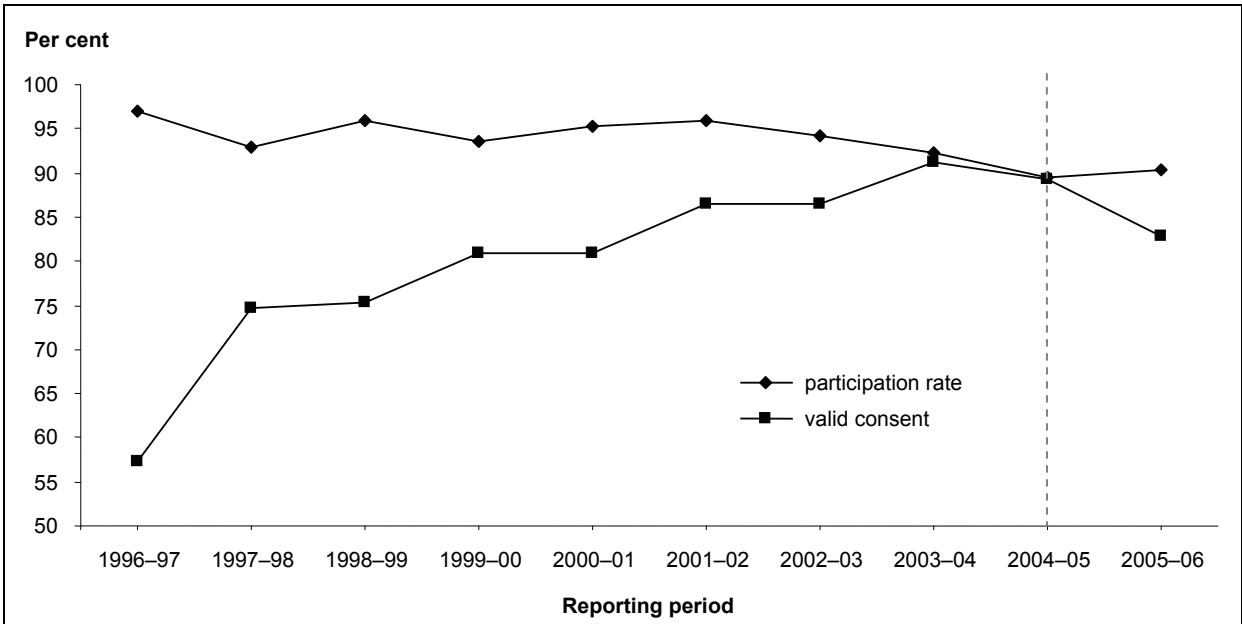
# 9 Support from 1996–97 to 2005–06

## 9.1 Key charts



Source: Table 9.2.

Figure 9.1: Number of SAAP support periods and clients, by reporting period, Victoria, 1996-97 to 2005-06



Source: Table 9.4.

**Figure 9.2: Agency participation rate and valid consent, by reporting period, Victoria, 1996-97 to 2005-06 (per cent)**

## 9.2 Tables

**Table 9.1: SAAP funding to agencies and mean funding per support period and client: current and constant 2005–06 dollars, by reporting period, Victoria, 1996–97 to 2005–06**

Reporting period	Total recurrent funding <sup>(a)</sup>	Funding to agencies <sup>(a)</sup>	Funding per support period <sup>(b)</sup>	Funding per client <sup>(b)</sup>
<b>Current \$</b>				
1996–97	48,401,000	44,466,000	1,210	1,870
1997–98	49,265,000	46,237,000	1,110	1,650
1998–99	48,028,000	46,991,000	1,060	1,620
1999–00	51,247,000	46,730,000	1,090	1,640
2000–01	55,970,000	52,964,000	1,220	1,880
2001–02	65,435,000	62,843,000	1,390	2,150
2002–03	72,163,000	67,833,000	1,390	2,220
2003–04	74,398,000	71,847,000	1,070	2,060
2004–05	78,474,000	75,484,000	1,220	2,090
2005–06	83,324,000	78,887,000	1,100	2,090
<b>Constant 2005–06 \$</b>				
1996–97	64,692,000	59,432,000	1,620	2,510
1997–98	69,225,000	64,970,000	1,550	2,320
1998–99	64,542,000	63,149,000	1,430	2,170
1999–00	63,414,000	57,825,000	1,350	2,030
2000–01	65,292,000	61,785,000	1,420	2,190
2001–02	71,409,000	68,580,000	1,520	2,350
2002–03	78,514,000	73,803,000	1,510	2,420
2003–04	81,487,000	78,694,000	1,170	2,250
2004–05	79,365,000	76,341,000	1,230	2,110
2005–06	83,324,000	78,887,000	1,100	2,090

(a) 'Total recurrent funding' and 'Funding to agencies' for 1999–00, 2000–01 and 2002–03 includes relatively small amounts provided through the Partnerships Against Domestic Violence Program (AIHW 2001a:Table 2.1; AIHW 2001b:Table 2.1; AIHW 2003:Table 2.1). Total recurrent funding' and 'Funding to agencies' for 2003–04, 2004–05 and 2005–06 includes state-only recurrent allocations which are in addition to the SAAP agreement between this government and the Australian Government (see Table 2.1;AIHW 2005:Table 2.1; AIHW 2006:Table 2.1).

(b) 'Funding per support period' and 'Funding per client' are based on recurrent allocations to agencies.

### Notes

1. In 2005–06 the definition of a support period, the definition of a client and the statistical linkage key were changed. Data using these are therefore not comparable to previous years.
2. Support period figures have been weighted to adjust for agency non-participation.
3. Client figures have been weighted to adjust for agency non-participation and client non-consent.

Sources: SAAP Administrative Data and Client Collections; AIHW 1997, 1999, 2000, 2001a, 2001b, 2002, 2003, 2005, 2006; ABS 2006b; FaCSIA unpublished data.

**Table 9.2: SAAP support periods and clients, by reporting period, Victoria, 1996–97 to 2005–06 (number)**

	1996–97	1997–98	1998–99	1999–00	2000–01	2001–02	2002–03	2003–04	2004–05	2005–06
Support periods	36,800	41,850	44,250	42,700	43,350	45,200	48,800	67,200	62,000	71,800
<i>Errors &amp; omissions</i>	—	—	—	—	—	—	—	—	—	—
Clients	23,700	28,050	29,100	28,500	28,150	29,200	30,500	34,950	36,100	37,650
<i>Errors &amp; omissions</i>	—	—	—	—	—	—	—	—	—	—
Nightly average support periods with accommodation	1,250	1,900	1,800	1,450	1,450	2,000	2,150	2,250	2,450	2,250
<i>Errors &amp; omissions</i>	1,179	1,236	1,917	1,613	977	1,146	1,067	1,783	1,306	1,523
Daily average support periods	5,000	5,400	6,250	6,250	6,100	6,850	7,550	7,450	8,350	7,650
<i>Errors &amp; omissions</i>	1,576	1,305	55	63	175	281	79	30	—	—

*Notes*

1. In 2005–06 the definition of a support period, the definition of a client and the statistical linkage key were changed. Data using these are therefore not comparable to previous years.
2. Numbers of clients in this table relate to clients who ever received assistance from a SAAP agency in Victoria.
3. Support period figures have been weighted to adjust for agency non-participation.
4. Client figures have been weighted to adjust for agency non-participation and client non-consent.

*Source:* SAAP Client Collection.

**Table 9.3: SAAP accompanying child support periods and accompanying children by reporting period, Victoria, 2001-02 to 2005-06 (number)**

	2001-02	2002-03	2003-04	2004-05	2005-06
Accompanying child support periods	23,900	25,650	25,700	29,700	29,400
<i>Errors &amp; omissions</i>	—	—	—	—	—
Accompanying children	18,300	19,900	19,650	20,450	18,500
<i>Errors &amp; omissions</i>	—	—	—	—	—
Nightly average accompanying child support periods with accommodation	1,350	1,500	1,450	1,700	1,700
<i>Errors &amp; omissions</i>	755	681	874	934	832
Daily average accompanying child support periods	4,600	5,000	4,850	5,250	5,650
<i>Errors &amp; omissions</i>	167	36	25	—	—

*Notes*

1. In 2005-06 the definition of an accompanying child support period, the definition of an accompanying child and the statistical linkage key were changed. Data using these are therefore not comparable to previous years.
2. Dates of support and accommodation are not collected for accompanying children. For the purposes of calculating the number of days of support and the number of nights of accommodation, accompanying children are assumed to have the same periods of support and accommodation as their parent(s) or guardian(s).
3. Numbers of accompanying children in this table relate to children who ever accompanied a client to a SAAP agency in Victoria.
4. In 2001-02, 2002-03 and 2003-04, data that enabled the number of accompanying children to be estimated was not collected by agencies using the high-volume collection form. The reporting year 2004-05 was the first year that the number of accompanying children could be reported for all participating agencies.
5. Accompanying child support period figures have been weighted to adjust for agency non-participation.
6. Accompanying children figures have been weighted to adjust for agency non-participation and client non-consent.

Source: SAAP Client Collection.

**Table 9.4: SAAP Client Collection: agency participation rates and forms returned with informed consent and valid consent by reporting period, Victoria, 1996-97 to 2005-06**

	1996-97	1997-98	1998-99	1999-00	2000-01	2001-02	2002-03	2003-04	2004-05	2005-06
Agencies <sup>(a)</sup> (number)	292	322	321	311	310	348	337	349	349	354
Agency participation rate (%)	96.9	92.9	96.0	93.6	95.2	96.0	94.1	92.3	89.4	90.4
Forms returned (number)	34,916	39,630	42,477	39,948	41,280	43,133	45,662	62,172	55,443	64,893
Forms returned with consent (%)	66.1	79.9	78.5	83.0	82.4	88.0	88.3	92.6	91.3	87.9
Forms returned with valid consent <sup>(b)</sup> (%)	57.3	74.7	75.4	81.0	80.9	86.5	86.5	91.3	89.2	82.9

(a) 'Agencies' refers to the number of agencies that were 'in scope'—that is, that should have been participating in the reference period.

(b) 'Valid consent' here refers to forms with a valid statistical linkage key (see 'statistical linkage key' in the Glossary and AIHW 2006:Glossary). Note that in 2005-06 the statistical linkage key was changed and therefore data using this is not comparable to previous years.

Note: Table based on forms returned from agencies in scope for the Client Collection during the reference period. Not all agencies funded under SAAP are required to participate in the Client Collection. For example, agencies that provide only support to other agencies or casual assistance lasting less than 1 hour on a given day and which is not of an ongoing nature are not required to participate in the collection. Consequently, some agencies funded under SAAP (see Chapter 2) are not included in this table.

Sources: SAAP Administrative Data and Client Collections.

